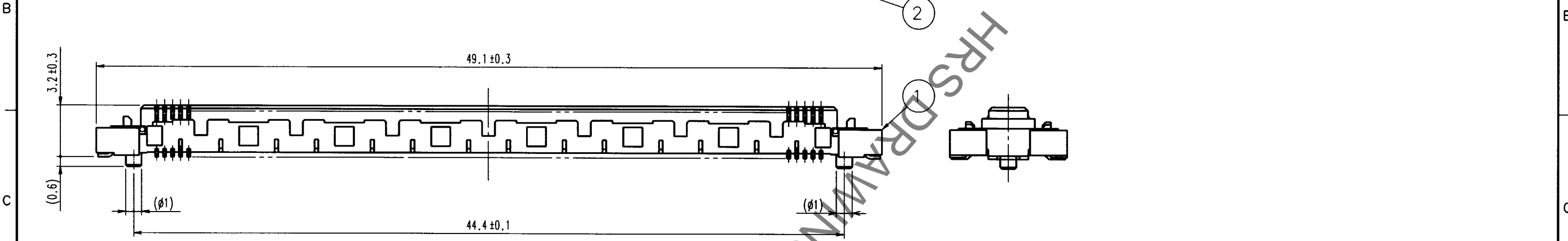
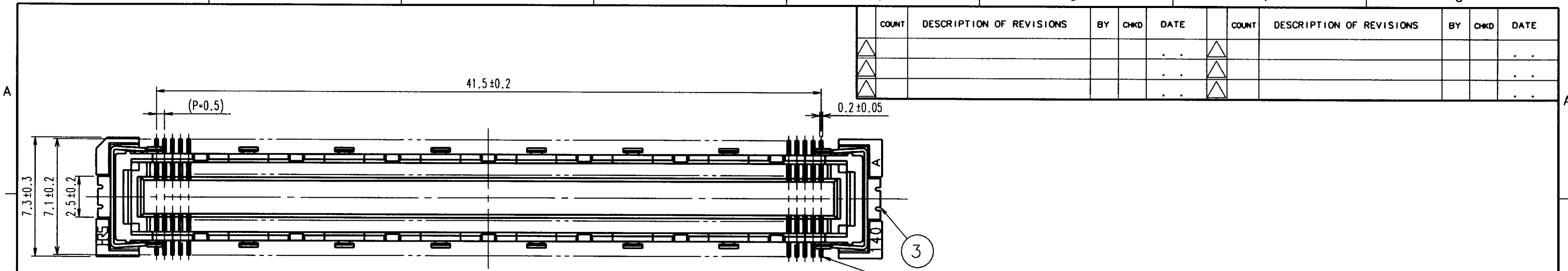
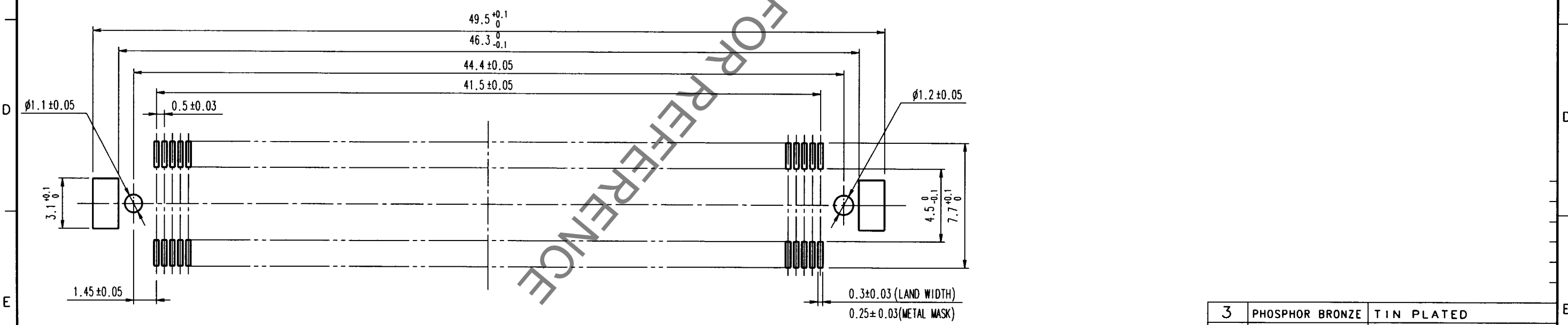


COUNT	DESCRIPTION OF REVISIONS	BY	CHKD	DATE	COUNT	DESCRIPTION OF REVISIONS	BY	CHKD	DATE
△					△				
△					△				
△					△				



RECOMMENDED LAND PATTERN



3	PHOSPHOR BRONZE	TIN PLATED
2	PHOSPHOR BRONZE	CONTACT AREA: GOLD (0.1μm) OVER NICKEL LEAD: GOLD PLATED (FLASH) OVER NICKEL
1	LCP	BEIGE UL94V-0

- NOTES
- 1 SMT LEAD-COPLANARITY: 0.1 MAX.
 - 2 THIS PRODUCT HAS NO POLARITY TO MOUNT ON THE RECOMMENDED LAND PATTERN.

TO
PCK

NO.	MATERIAL	FINISH, REMARKS	NO.	MATERIAL	FINISH, REMARKS		
CODE NO. (OLD)	CL		DRAWN	DESIGNED	CHECKED	APPROVED	RELEASED
			J. Takada 99-10-18	J. Takada 99-10-18	M. Sakata 99-10-18	T. Yoshimura 99-10-18	
DRAWING NO.		PART NO.					
EDC3-151987		FX10A-168S-SV					
SCALE		CODE NO.					
4 : 1		CL570-0244-7					
UNITS		HRS		HIROSE ELECTRIC CO., LTD			
mm							