

STANDARD LATCH SPECIAL LATCH

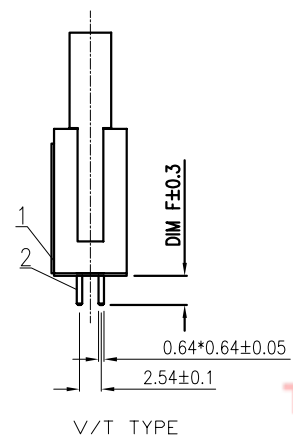
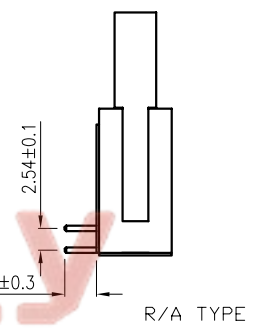
FIGURE A

R/A TYPE

| LATCH TYPE | DIM. E | Pin Length mm | |
|----------------|--------|---------------|-------|
| | | S | L |
| Standard Latch | 3.70 | 16.00 | 20.60 |

V/T TYPE

| LATCH TYPE | DIM. F | Pin Length mm | |
|----------------|--------|---------------|--|
| | | L | |
| Standard Latch | 3.10 | 16.00 | |
| Standard Latch | 8.10 | 21.00 | |



| REV. | DESCRIPTION | DRAWN | CHECKED | APPROVED |
|------|-------------|---------------|---------|----------|
| A | NEW RELEASE | LJC 04/27/05' | | 卢金春 |
| B | ADD DIM | LL 09/21/06' | | |

- NOTES:
- ELECTRICAL CHARACTERISTICS:
 - CONTACT RESISTANCE: 20mΩ Max. INITIAL.
 - DIELECTRIC WITHSTANDING VOLTAGE: 500V AC(rms) FOR 1 MINUTE.
 - INSULATION RESISTANCE: 1000MΩ Min.
 - MECHANICAL CHARACTERISTICS:
 - CONTACT RETENTION FORCE: 1000gf Min.
 - ENVIRONMENT CHARACTERISTICS:
 - OPERATING TEMPERATURE: 0°C~+85°C.
 - STORAGE TEMPERATURE: -20°C~+70°C.
 - PART NUMBER: DS1011
 - PRODUCT NUMBER CODE:

DS1011- X X X X X X

 - LOCK DIM. 7: 7.90mm(standard) 4: 4.50mm(special)
 - HOUSING COLOR B:BLACK
 - CONTACT PLATING Si: Full Gold flash
 - HOUSING TYPE B: BIG LATCH HOUSING
 - MOUNTING TYPE S: STRAIGHT R: R/A
 - No.OF CONTACTS 10 14 16 20 26 30 34 40 50 60 64
 - SERIES No. DS1011 SERIES

AVAILABLE DIMENSION TABLE

| No.of Contacts | 10 | 14 | 16 | 20 | 26 | 30 | 34 | 40 | 50 | 60 | 64 |
|----------------|-------|-------|-------|-------|-------|-------|-------|-------|-------|-------|--------|
| A | 32.1 | 37.18 | 39.72 | 44.80 | 52.42 | 57.50 | 62.58 | 70.20 | 82.90 | 95.60 | 100.68 |
| B | 22.20 | 27.28 | 29.82 | 34.90 | 42.52 | 47.60 | 52.68 | 60.30 | 73.00 | 85.70 | 90.78 |
| C | 10.16 | 15.24 | 17.78 | 22.86 | 30.48 | 35.56 | 40.64 | 48.26 | 60.96 | 73.66 | 78.74 |
| D | 18.10 | 23.18 | 25.72 | 30.47 | 38.42 | 43.50 | 48.58 | 56.20 | 68.90 | 81.60 | 86.68 |

Tel: 86-574-63508787
Fax: 86-574-63510817

GENERAL TOLERANCE

| | |
|-----|-------|
| X. | ±0.60 |
| .X | ±0.38 |
| .XX | ±0.25 |

ANGLE TOLERANCE

| | |
|-----|-----|
| X. | ±5° |
| .X | ±3° |
| .XX | ±2° |

| PROJECTION | TITLE | SHOUEDED HEADER PITCH 2.54mm | |
|------------|-------|------------------------------|---------------|
| | mm | | |
| UNITS | A4 | SERIES | DS1011 SERIES |

BIG LATCH HOUSING

| ITEM | PART NAME | PART NO. | MATERILAS | FINISHED | DRAWING NO. | CUSTOMER |
|------|-----------|----------|---------------|-------------|--------------|------------------|
| 2 | CONTACT | | COPPER ALLOY | GOLD PLATED | DRAWING TYPE | CUSTOMER |
| 1 | HOUSING | | THERMOPLASTIC | UL 94 V-0 | SCALE | 1:1 SHEET 1 OF 1 |
| | | | | | | C-DS1011-XXBXXX |

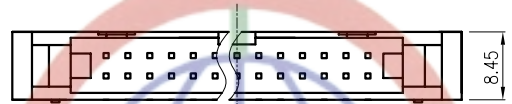
晨翔电子有限公司
CONNFLY CONNFLY ELECTRONIC CO. LTD

| REV. | DESCRIPTION | DRAWN | CHECKED | APPROVED |
|------|-------------|---------------|---------|----------|
| A | NEW RELEASE | LJC 04/27/05' | | 卢金春 |
| B | 图面绘制错误 | LL 10/29/06' | | |
| | | | | |

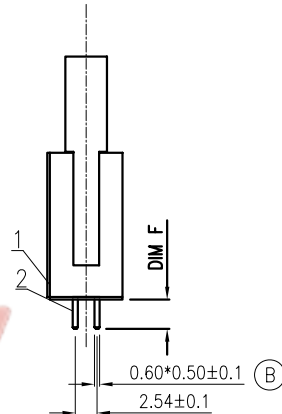
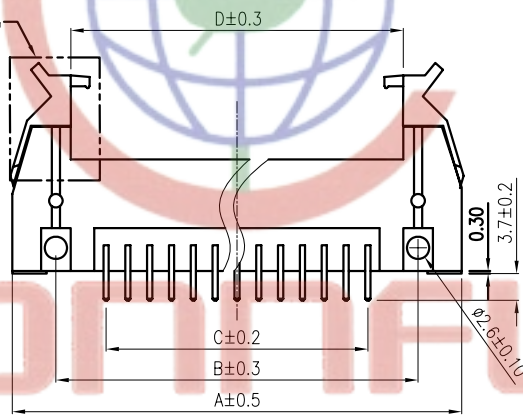
NOTES:

- ELECTRICAL CHARACTERISTICS:
 - CONTACT RESISTANCE: 20mΩ Max. INITIAL.
 - DIELECTRIC WITHSTANDING VOLTAGE: 500V AC(rms) FOR 1 MINUTE.
 - INSULATION RESISTANCE: 1000MΩ Min.
- MECHANICAL CHARACTERISTICS:
 - CONTACT RETENTION FORCE: 1000gf Min.
- ENVIRONMENT CHARACTERISTICS:
 - OPERATING TEMPERATURE: 0°C~+85°C.
 - STORAGE TEMPERATURE: -20°C~+70°C.
- PART NUMBER: DS1011
- PRODUCT NUMBER CODE: DS1011- X X X X X X

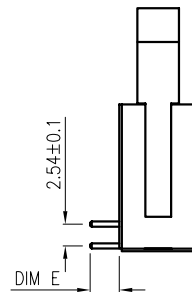
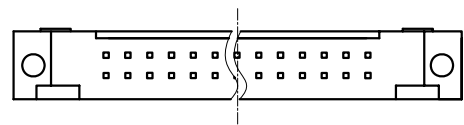
- LOCK DIM.
 - 8: 8.60mm(standard latch)
 - 2: 4.20mm(short latch)
 - S: 4.2mm(special latch)
- HOUSING COLOR
 - B: BLACK
- CONTACT PLATING
 - 0: SELECTIVE GOLD FLASH
- HOUSING TYPE
 - S: SMALL LATCH HOUSING
- MOUNTING TYPE
 - S: STRAIGHT
 - R: R/A
- No.OF CONTACTS
 - 10 14 16 20 26 30 34 40 50 60 64



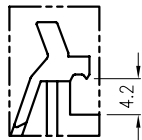
SEE FIGURE A



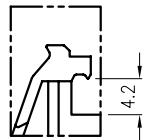
V/T TYPE



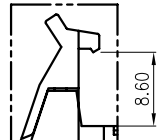
R/A TYPE



SPECIL LATCH



SHORT LATCH



STANDARD LATCH

FIGURE A

AVAILABLE DIMENSION TABLE

| No.of Contacts | 10 | 14 | 16 | 20 | 26 | 30 | 34 | 40 | 50 | 60 | 64 |
|----------------|-------|-------|-------|-------|-------|-------|-------|-------|-------|-------|--------|
| A | 31.92 | 37.00 | 39.54 | 44.62 | 52.24 | 57.32 | 62.40 | 70.02 | 82.72 | 95.42 | 100.50 |
| B | 21.72 | 26.80 | 29.34 | 34.42 | 42.04 | 47.12 | 52.20 | 59.82 | 72.52 | 85.22 | 90.30 |
| C | 10.16 | 15.24 | 17.78 | 22.86 | 30.48 | 35.56 | 40.64 | 48.26 | 60.96 | 73.66 | 78.74 |
| D | 18.22 | 23.30 | 25.84 | 30.92 | 38.54 | 43.62 | 48.70 | 56.32 | 69.02 | 81.72 | 86.80 |

| LATCH TYPE | DIM. | |
|--------------|------|------|
| | E | F |
| Short Latch | 3.40 | 3.70 |
| Specil Latch | 3.40 | 3.70 |
| Long Latch | 3.40 | 3.70 |

SMALL LATCH HOUSING

| ITEM | PART NAME | PART NO. | MATERILAS | FINISHED | DRAWING NO. | CUSTOMER |
|------|-----------|----------|---------------|-------------|--------------|------------------|
| 2 | CONTACT | | COPPER ALLOY | GOLD PLATED | DRAWING TYPE | CUSTOMER |
| 1 | HOUSING | | THERMOPLASTIC | UL 94 V-0 | SCALE | 1:1 SHEET 1 OF 1 |
| | | | | | | C-DS1011-XXSXXX |

| GENERAL TOLERANCE | |
|-------------------|-------|
| X. | ±0.60 |
| .X | ±0.38 |
| .XX | ±0.25 |

| ANGLE TOLERANCE | |
|-----------------|-----|
| X. | ±5° |
| .X | ±3° |
| .XX | ±2° |

| PROJECTION | TITLE |
|------------|-----------------------------|
| | SHOUDED HEADER PITCH 2.54mm |
| UNITS | mm |
| SHEET SIZE | A4 |
| SERIES | DS1011 SERIES |

晨翔电子有限公司
CONNFLY CONNFLY ELECTRONIC CO. LTD