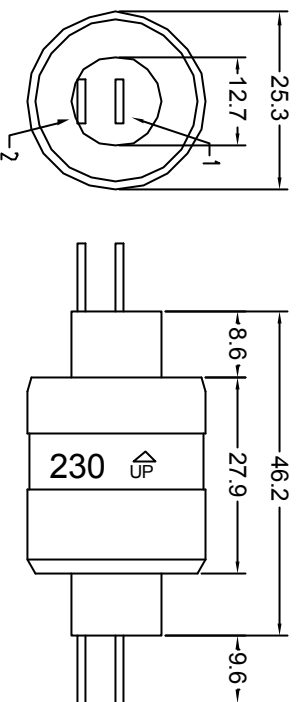


# MERCOTAC 230 / 230-SS

CELCO PROFIL S.p.A

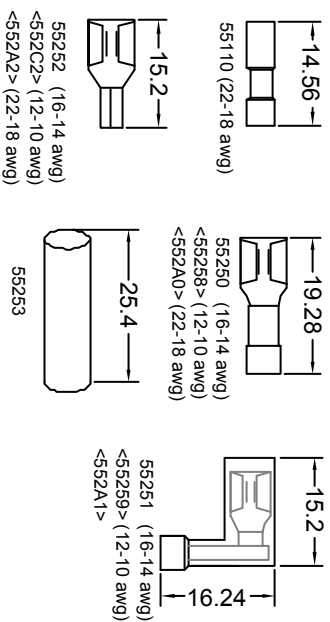
Vigonovo (VE) - Italy

Tel. +39 1499811211 Fax. +39 1499811255

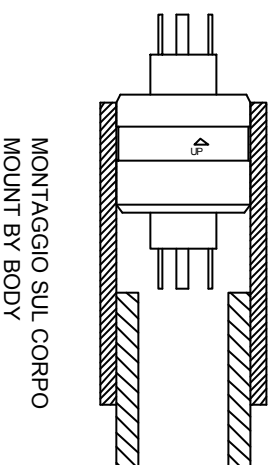


MODELLO - MODEL		230
CANALI CONDUCTOR	N.	2
PORTATA CURRENT CAPACITY	A	2x30
POTENZA POWER RATING	KW	7.2
TENSIONE VOLTAGE RANGE	V IAC/DCI	0-250
MASSIMA FREQUENZA MAX FREQ.	MHz	200
RESISTENZA SERIE CONTACT RESIST.	m ohm	< 1
MAX VELOCITA' MAX SPEED	rpm	1800
MAX/MIN TEMP Isul corpol MAX/MIN OPERATING TEMP. IbodyI	°C	60 / -29
TIPICA COPPIA ROTAZIONE ROTATION TORQUE	gr - cm	200
RESISTENZA ISOLAMENTO CIRCUIT SEPARATION RESIST.	M ohm	> 25

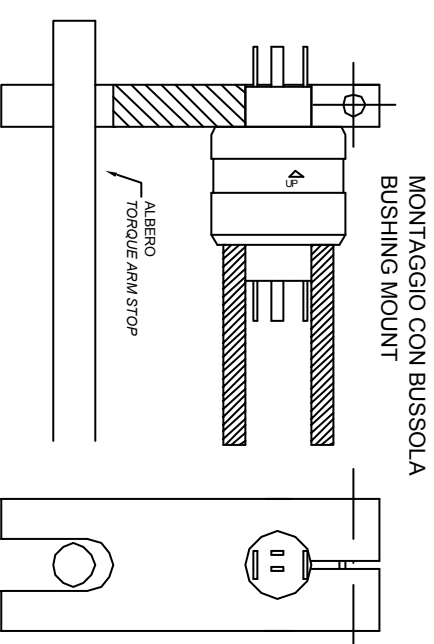
-SS modello con cuscinetto in acciaio inox  
-SS model with stainless steel ball bearing



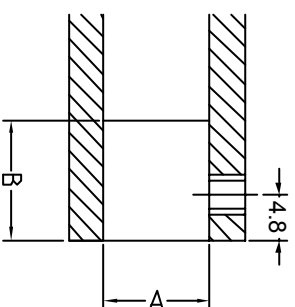
CONNESSIONI OPZIONALI - OPTIONAL DISCONNECTS



MONTAGGIO SUL CORPO MOUNT BY BODY

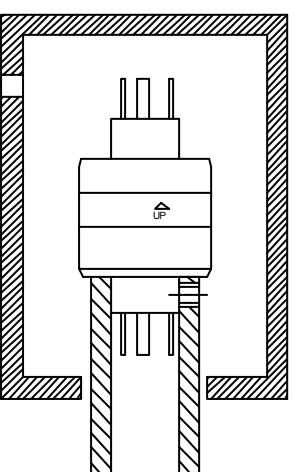


MONTAGGIO CON BUSSOLA BUSHING MOUNT



ESEMPI DI MONTAGGIO

CUSTODIA PROTETTIVA PROTECTIVE ENCLOSURE



Bussola Bushing	Corpo Body
A	B
12.70	10.20
	25.35
	20.03