



### 特点 Features

- 常规通用  
General purpose
- 体积小，便于安装  
Compact unit, Easy to install

### 应用 Applications

- 抑制沿电源线传输的工业无线电干扰  
Suppress the industrial radio interference along power lines.

### 技术参数 Technical Data

额定电压 Rated Voltage	250/440 VAC
工作频率 Operating Frequency	50/60Hz
额定电流 Rated Current	5A-200A
耐压试验(一分钟) Test Voltage(1 min)	1500 VDC (line/line) 2250 VDC (line/ground)
气候类别 Climatic Category	25/085/21

型号 Model DL-	端子方式 Terminal		额定电流 Rated Current (A)	接地电容量 Ground Capacitance (nF)	放电电阻 Discharge Resistance (MΩ)	电路图 Circuit Diagram fig.	外形尺寸 Dimension fig.
	入 Input	出 Output					
5EB			5	6.8		1	1
10EB			10	6.8		1	1
5EBX1			5	6.8		1	2
10EBX1			10	6.8		1	2
15EB3			15	6.8		2	3
20EB3			20	6.8		2	3
25EB3			25	6.8		2	3
30EB3			30	6.8		2	3
40EB3			40	6.8		2	4
50EB3			50	6.8		2	4
100EB1			100	50	0.44	3	5
150EB1			150	50	0.44	3	5
200EB11			200	50	0.44	3	6

电原理图 Typical Circuit Diagram

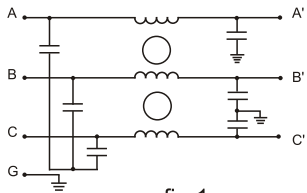


fig.1

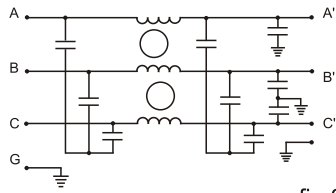


fig.2

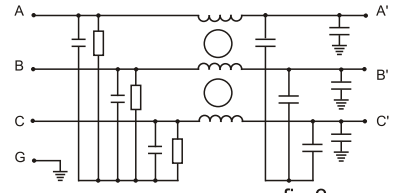


fig.3

外形尺寸 Outline Drawing and Dimensions (mm)

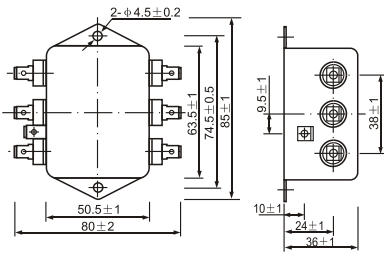


fig.1

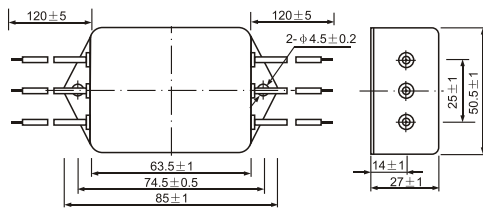


fig.2

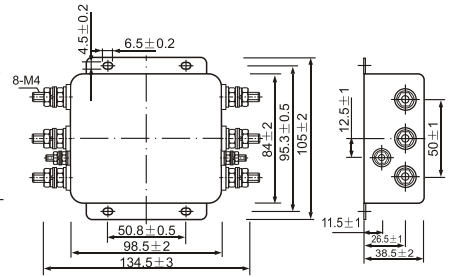


fig.3

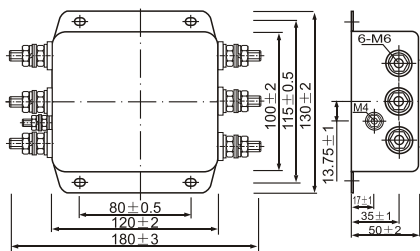


fig.4

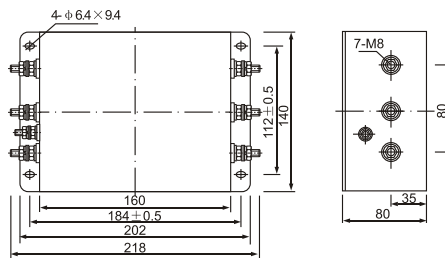


fig.5

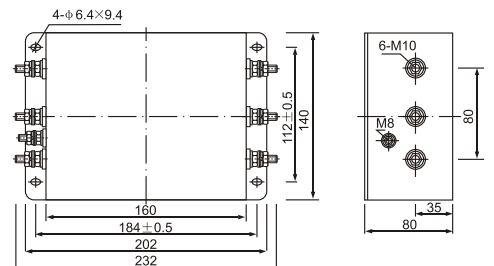
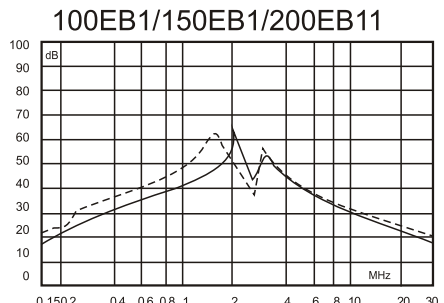
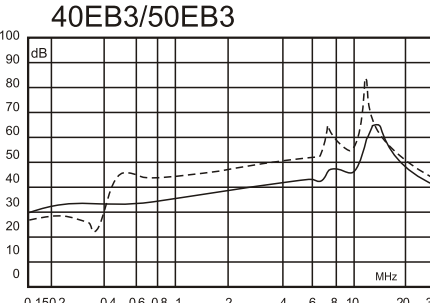
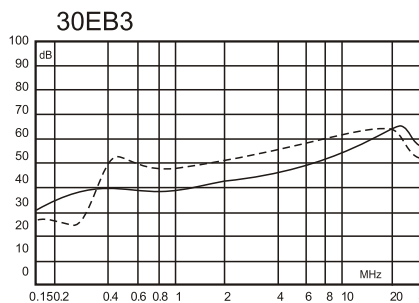
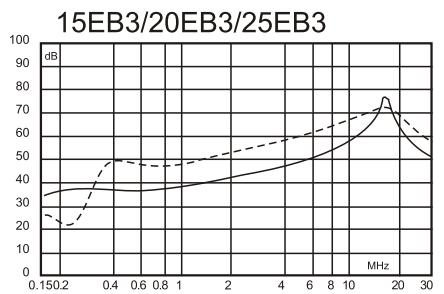
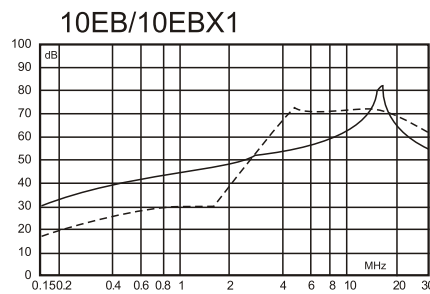
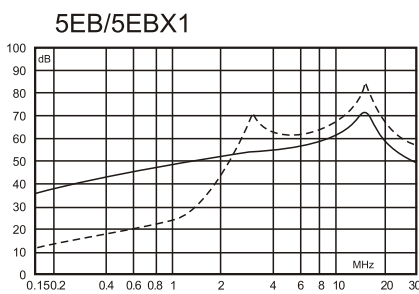


fig.6

插入损耗 Insertion Loss in dB

(50 Ω 测量系统, IEC/CISPR No.17 号出版物 Measured in 50 Ω system, as IEC/CISPR No.17)



—— 共模(Common Mode)  
 - - - - 差模(Differential Mode)